

# CP100 Wallmount Control Panel


---

Owner's Manual



**BLUESOUND**  
PROFESSIONAL

# IMPORTANT SAFETY INSTRUCTIONS

- **Read instructions** - All the safety and operating instructions should be read before the product is operated.
- **Retain instructions** - The safety and operating instructions should be retained for future reference.
- **Heed Warnings** - All warnings on the product and in the operating instructions should be adhered to.
- **Follow Instructions** - All operating and use instructions should be followed.
- **Cleaning** - Unplug this product from the wall outlet before cleaning. Do not use liquid cleaners or aerosol cleaners. Use a dry cloth for cleaning.
- **Attachments** - Do not use attachments not recommended by the product manufacturer as they may cause hazards.
- **Water and Moisture** - Do not use this product near water-for example, near a bath tub, wash bowl, kitchen sink, or laundry tub; in a wet basement; or near a swimming pool; and the like.
- **Accessories** - Do not place this product on an unstable cart, stand, tripod, bracket, or table. The product may fall, causing serious injury to a child or adult and serious damage to the product. Use only with a cart, stand, tripod, bracket, or table recommended by the manufacturer, or sold with the product. Any mounting of the product should follow the manufacturer's instructions, and should use a mounting accessory recommended by the manufacturer.
-  **Cart** - A product and cart combination should be moved with care. Quick stops, excessive force, and uneven surfaces may cause the product and cart combination to overturn.
- **Ventilation** - Slots and openings in the cabinet are provided for ventilation to ensure reliable operation of the product and to protect it from overheating. These openings must not be blocked or covered. The openings should never be blocked by placing the product on a bed, sofa, rug, or other similar surface. This product should not be placed in a built-in installation such as a bookcase or rack unless proper ventilation is provided or the manufacturer's instructions have been adhered to.
- **Power Sources** - This product should be operated only from the type of power source indicated on the marking label and connected to a MAINS socket outlet with a protective earthing connection. If you are not sure of the type of power supply to your home, consult your product dealer or local power company.
- **Power-Cord Protection** - Power-supply cords should be routed so that they are not likely to be walked on or pinched by items placed upon or against them, paying particular attention to cords at plugs, convenience receptacles, and the point where they exit from the product.
- **Mains Plug** - Where the mains plug or an appliance coupler is used as the disconnect device, the disconnect device shall remain readily operable.
- **Outdoor Antenna Grounding** - If an outside antenna or cable system is connected to the product, be sure the antenna or cable system is grounded so as to provide some protection against voltage surges and built-up static charges. Article 810 of the National Electrical Code, ANSI/NFPA 70, provides information with regard to proper grounding of the mast and supporting structure, grounding of the lead-in wire to an antenna discharge unit, size of grounding conductors, location of antenna discharge unit, connection to grounding electrodes, and requirements for the grounding electrode.
- **Lightning** - For added protection for this product during a lightning storm, or when it is left unattended and unused for long periods of time, unplug it from the wall outlet and disconnect the antenna or cable system. This will prevent damage to the product due to lightning and power-line surges.
- **Power Lines** - An outside antenna system should not be located in the vicinity of overhead power lines or other electric light or power circuits, or where it can fall into such power lines or circuits. When installing an outside antenna system, extreme care should be taken to keep from touching such power lines or circuits as contact with them might be fatal.
- **Overloading** - Do not overload wall outlets, extension cords, or integral convenience receptacles as this can result in a risk of fire or electric shock.
- **Flame Sources** - No naked flame sources, such as lighted candles, should be placed on the product.
- **Object and Liquid Entry** - Never push objects of any kind into this product through openings as they may touch dangerous voltage points or short-out parts that could result in a fire or electric shock. Never spill liquid of any kind on the product.
- **Headphones** - Excessive sound pressure from earphones and headphones can cause hearing loss.
- **Damage Requiring Service** - Unplug this product from the wall outlet and refer servicing to qualified service personnel under the following conditions:
  - When the power-supply cord or plug is damaged.
  - If liquid has been spilled, or objects have fallen into the product.
  - If the product has been exposed to rain or water.
  - If the product does not operate normally by following the operating instructions. Adjust only those controls that are covered by the operating instructions as an improper adjustment of other controls may result in damage and will often require extensive work by a qualified technician to restore the product to its normal operation.
  - If the product has been dropped or damaged in any way.
  - When the product exhibits a distinct change in performance-this indicates a need for service.
- **Replacement Parts** - When replacement parts are required, be sure the service technician has used replacement parts specified by the manufacturer or have the same characteristics as the original part. Unauthorized substitutions may result in fire, electric shock, or other hazards.
- **Battery Disposal** - When disposing of used batteries, please comply with governmental regulations or environmental public instruction's rules that apply in your country or area.
- **Safety Check** - Upon completion of any service or repairs to this product, ask the service technician to perform safety checks to determine that the product is in proper operating condition.
- **Wall or Ceiling Mounting** - The product should be mounted to a wall or ceiling only as recommended by the manufacturer.

## WARNING



THE LIGHTNING FLASH WITH ARROWHEAD SYMBOL, WITHIN AN EQUILATERAL TRIANGLE, IS INTENDED TO ALERT THE USER TO THE PRESENCE OF UNINSULATED "DANGEROUS VOLTAGE" WITHIN THE PRODUCT'S ENCLOSURE THAT MAY BE OF SUFFICIENT MAGNITUDE TO CONSTITUTE A RISK OF ELECTRIC SHOCK TO PERSONS



THE EXCLAMATION POINT WITHIN AN EQUILATERAL TRIANGLE IS INTENDED TO ALERT THE USER TO THE PRESENCE OF IMPORTANT OPERATING AND MAINTENANCE (SERVICING) INSTRUCTIONS IN THE LITERATURE ACCOMPANYING THE APPLIANCE.



## CAUTION REGARDING PLACEMENT

To maintain proper ventilation, be sure to leave a space around the unit (from the largest outer dimensions including projections) than is equal to, or greater than shown below.

Left and Right Panels: 10 cm  
Rear Panel: 10 cm  
Top Panel: 10 cm

Do not install near any heat sources such as radiators, heat registers, stoves, or other apparatus (including amplifiers) that produce heat.

Do not defeat the safety purpose of the polarized or grounding-type plug. A polarized plug has two blades with one wider than the other. A grounding type plug has two blades and a third grounding prong. The wide blade or the third prong is provided for your safety. When the provided plug does not fit into your outlet, consult an electrician for replacement of the obsolete outlet.

The apparatus should only be used in moderate climates.

## FCC STATEMENT

This equipment has been tested and found to comply with the limits for Class B digital device, pursuant to Part 15 of the FCC Rules. These limits are designed to provide reasonable protection against harmful interference in a residential installation. This equipment generates, uses, and can radiate radio frequency energy and, if not installed and used in accordance with the instructions, may cause harmful interference to radio communications. However, there is no guarantee that interference will not occur in a particular installation. If this equipment does cause harmful interference to radio or television reception, which can be determined by turning the equipment off and on, the user is encouraged to try to correct the interference by one or more of the following measures:

- Reorient or relocate the receiving antenna.
- Increase the separation between the equipment and receiver.
- Connect the equipment into an outlet on a circuit different from that to which the receiver is connected.
- Consult the dealer or an experienced radio TV technician for help.

## CAUTION

- Changes or modifications to this equipment not expressly approved by Bluesound Professional for compliance could void the user's authority to operate this equipment.
- This device complies with Part 15 of the FCC Rules. Operation is subject to the following two conditions:
  - 1 this device may not cause harmful interference, and
  - 2 this device must accept any interference received, including interference that may cause undesired operation.
- This device contains licence-exempt transmitter(s)/receiver(s) that comply with Innovation, Science and Economic Development Canada's licence-exempt RSS(s). Operation is subject to the following two conditions:
  - 1 This device may not cause interference.
  - 2 This device must accept any interference, including interference that may cause undesired operation of the device.
- To prevent electric shock, match wide blade of plug to wide slot, fully insert.
- Marking and rating plate can be found at the bottom enclosure of the apparatus.
- To reduce the risk of fire or electric shock, do not expose this apparatus to rain or moisture. The apparatus shall not be exposed to dripping or splashing and that no objects filled with liquids, such as vases, shall be placed on apparatus.
- Mains plug is used as disconnect device and it should remain readily operable during intended use. In order to disconnect the apparatus from the mains completely, the mains plug should be disconnected from the mains socket outlet completely.
- Battery shall not be exposed to excessive heat such as sunshine, fire or the like.
- Danger of explosion if battery is incorrectly replaced. Replace only with the same or equivalent type.
- Operating temperature: 0-35 degrees Celsius

## RESPONSIBLE PARTY

Lenbrook International  
 633 Granite Court  
 Pickering, ON L1W 3K1  
 Canada  
 Tel: 1 905 8316555

## MPE REMINDER

To satisfy FCC/IC RF exposure requirements, a separation distance of 20 cm or more should be maintained between the antenna of this device and persons during device operation. To ensure compliance, operations at closer than this distance is not recommended.

## IF IN DOUBT CONSULT A COMPETENT ELECTRICIAN.



This product is manufactured to comply with the radio interference requirements of EEC DIRECTIVE 2004/108/EC.

## NOTES ON ENVIRONMENTAL PROTECTION



At the end of its useful life, this product must not be disposed of with regular household waste but must be returned to a collection point for the recycling of electrical and electronic equipment. The symbol on the product, user's manual and packaging point this out.



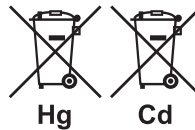
The materials can be reused in accordance with their markings. Through re-use, recycling of raw materials, or other forms of recycling of old products, you are making an important contribution to the protection of our environment.

Your local administrative office can advise you of the responsible waste disposal point.

## INFORMATION ABOUT COLLECTION AND DISPOSAL OF WASTE BATTERIES (DIRECTIVE 2006/66/EC OF THE EUROPEAN PARLIAMENT AND THE COUNCIL OF EUROPEAN UNION) (FOR EUROPEAN CUSTOMERS ONLY)



Batteries bearing any of these symbols indicate that they should be treated as "separate collection" and not as municipal waste. It is encouraged that necessary measures are implemented to maximize the separate collection of waste batteries and to minimize the disposal of batteries as mixed municipal waste.



End-users are exhorted not to dispose waste batteries as unsorted municipal waste. In order to achieve a high level of recycling waste batteries, discard waste batteries separately and properly through an accessible collection point in your vicinity. For more information

about collection and recycling of waste batteries, please contact your local municipality, your waste disposal service or the point of sale where you purchased the items.

By ensuring compliance and conformance to proper disposal of waste batteries, potential hazardous effects on human health is prevented and the negative impact of batteries and waste batteries on the environment is minimized, thus contributing to the protection, preservation and quality improvement of the environment.

## WHAT'S IN THE BOX

Packed with your CP100 you will find

- Bracket
- One screw to secure and fix CP100 with the bracket
- Quick Setup Guide

## QUICK START

Refer to the supplied CP100 Quick Setup Guide for basic instructions in setting up your new Bluesound Professional CP100.

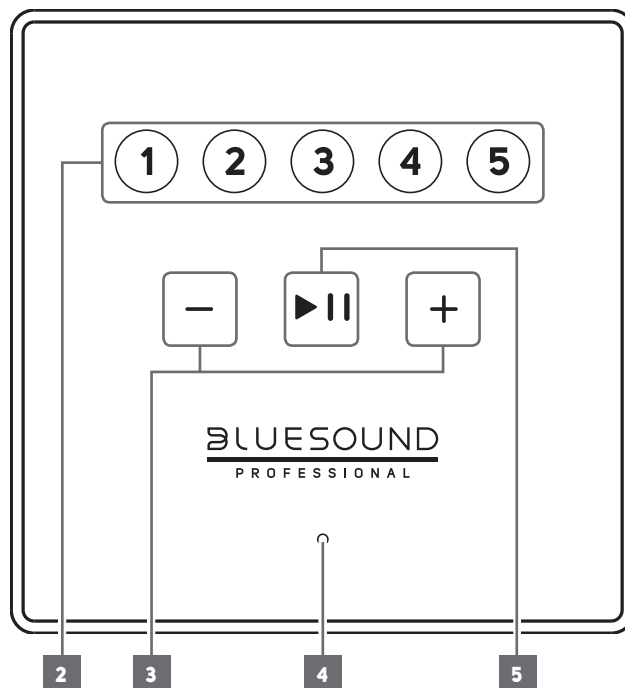
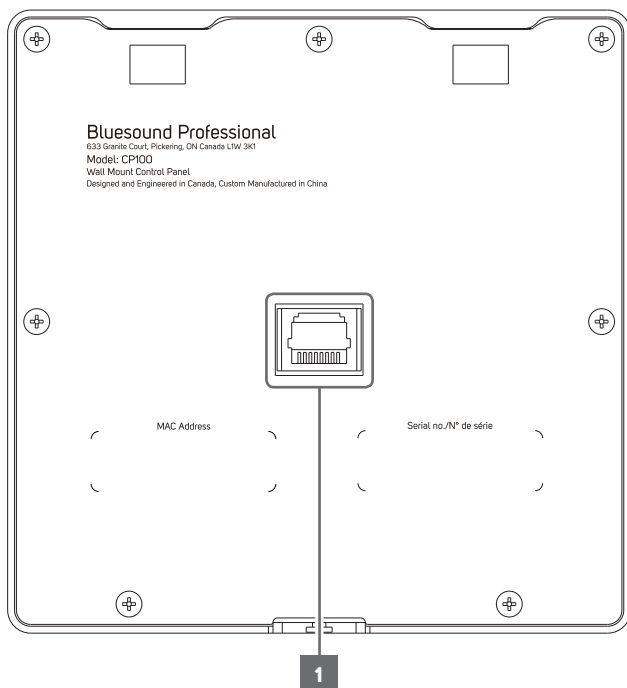
## FACTORY RESET

CP100 can be factory reset or restored to factory default settings using the following method.

- 1 Disconnect from CP100 LAN port the Ethernet cable that is connected to an Ethernet broadband router with Power over Ethernet (PoE).
- 2 Reconnect Ethernet cable to CP100 LAN port and when LED indicator turns red, press and hold ►|| (PLAY/PAUSE). Do not release hold of ►|| (PLAY/PAUSE) – LED indicator turns green and then back to red.
- 3 After about 30 seconds of holding down ►|| (PLAY/PAUSE), LED indicator blinks red.
- 4 Release ►|| (PLAY/PAUSE) as soon as LED indicator blinks red.
- 5 Factory reset is completed once LED indicator turns solid blue.

## IMPORTANT NOTES

*Releasing ►|| (PLAY/PAUSE) at any time before LED indicator starts flashing red will cancel the factory reset and leave the CP100 at Upgrade Mode. Just start again the procedure for Factory Reset.*



## 1 LAN PORT

- Using a standard straight-through Ethernet cable (not supplied), connect one end of the Ethernet cable to the LAN port of your Ethernet broadband router with Power over Ethernet (PoE) and the other end to CP100's LAN port. It is understood that the Ethernet cable from the router to CP100 will run through the in-wall low voltage box where the CP100 bracket is installed.

## 2 PRESET 1 – 5

- Select any of the 5 Preset numbers to immediately recall and playback your favorite radio stations, music streams or playlists saved on the Preset selected.
- Ensure that you have created Presets in the BluOS device(s) integrated in your CP100 setup.
- When a Preset is selected, for example Preset 2, the BluOS devices integrated in your CP100 setup will simultaneously playback their respective Preset 2s.

## 3 +/- (VOLUME)

- Press "+" or "-" to simultaneously increase or decrease the volume level of the BluOS devices integrated in your CP100 setup.

## 4 LED INDICATOR

- This indicator will light up red when CP100 is booting up or has no network connection.
- When CP100 is powered up and has established network connection, this indicator will illuminate blue.

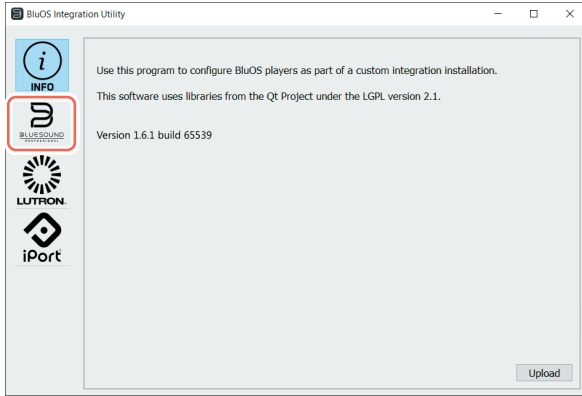
## 5 ▶|| (PLAY/PAUSE)

- Press "▶||" to play or pause playback of the BluOS devices integrated in your CP100 setup.

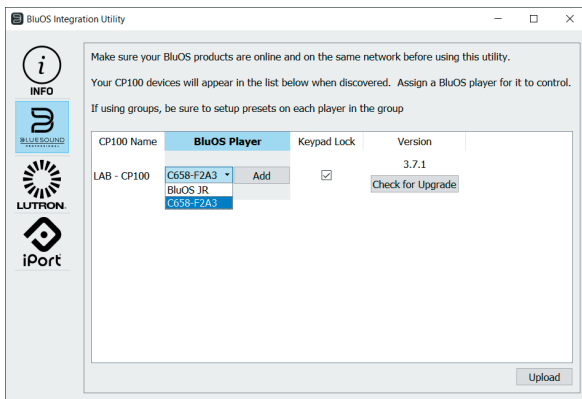
## SETUP

Setup your CP100 via the BluOS Integration Utility App, which can be downloaded from [www.bluesoundprofessional.com/product/CP100](http://www.bluesoundprofessional.com/product/CP100). Windows or macOS versions of the BluOS Integration Utility App are available. Launch the BluOS Integration Utility App.

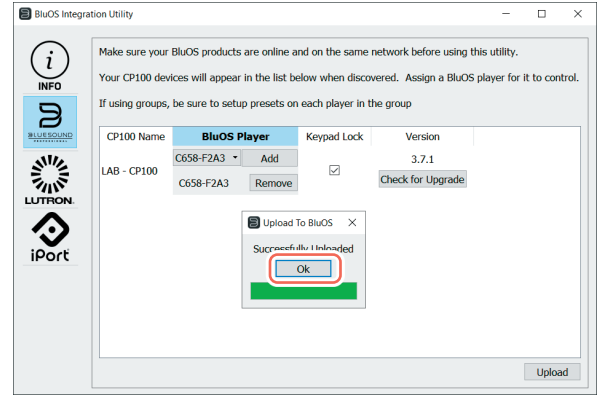
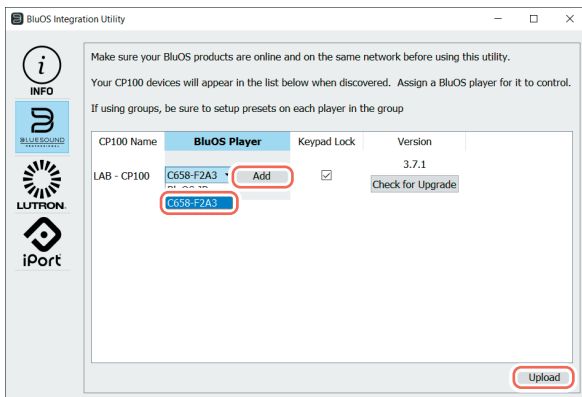
- 1 Select Bluesound icon from the BluOS Integration Utility app.



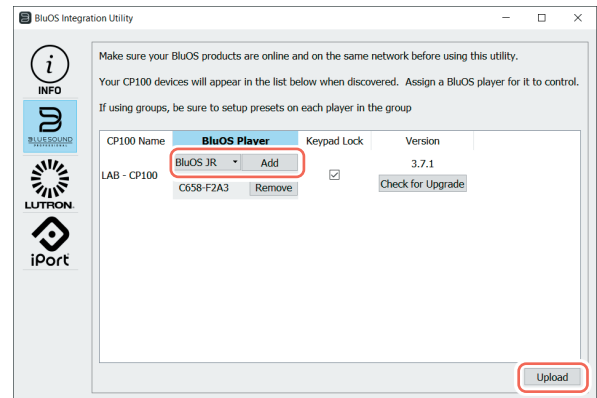
- 2 BluOS products that are online and on the same network as your CP100 will appear under "BluOS Player" column.



- 3 Use the drop down tab to select and "Add" a BluOS Player, "Upload" and then "OK" to complete the process.

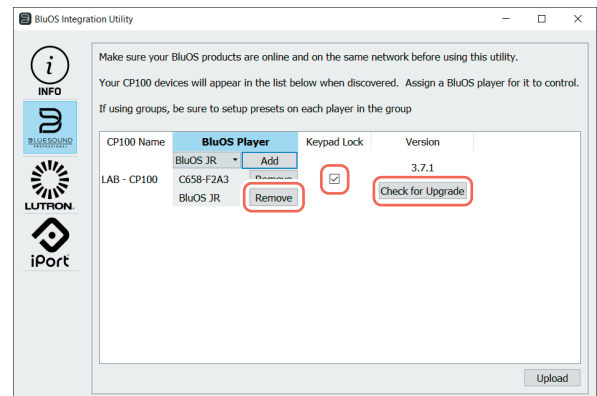


- 4 Repeat the same process to add more BluOS Player discovered in the same network.



- 5 The following features can also be configured via the BluOS Integration Utility App.

- **Remove:** If you would like to remove a BluOS Player from the CP100 setup, select "Remove", then "Upload" and "OK".
- **Keypad Lock:** Select the checkbox for "Keypad Lock" to lock (check mark) or unlock (no check mark) the CP100 Control Panel, then "Upload" and "OK". With the keypads locked, the keypads will blink three times whenever any of the keypads are pressed.
- **Temporarily unlock keypads via Control Panel:** Press and hold "▶||" of the CP100 Control Panel until all Preset 1 – 5 keypads flash once. All keypads in the Control Panel are now operational. The keypads will lock-up again after 30 seconds of non-user interface activity.
- **Check for Upgrade:** Select "Check for Upgrade" to check if any firmware upgrade is available.

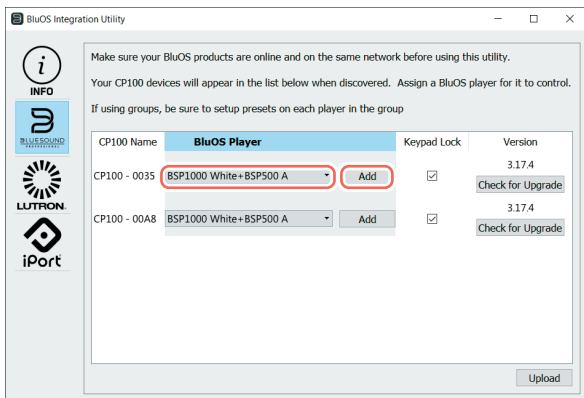


**CP100 PRIMARY/SECONDARY VOLUME CONTROL**

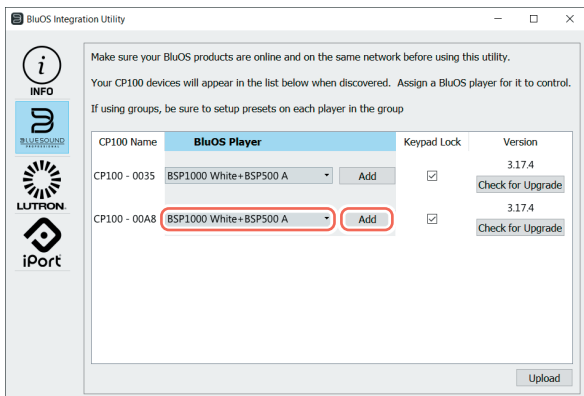
- Primary and secondary volume control is available when more than one CP100 is in use.
- The players you want to control must already be in groups.
- Operation of primary and secondary volume control requires the players to be in temporary groups. Fixed groups are not supported since they do not show primary/secondary player control in dropdown menu.
- This feature requires version 1.6.1 or later of the BluOS Integration Utility app.

**EXAMPLE USING A BSP1000 WHITE, AND BSP500 A**

- Select a group of players for CP100 #1. (Players must be in a temporary group, fixed groups are not supported.)
- Click "Add".

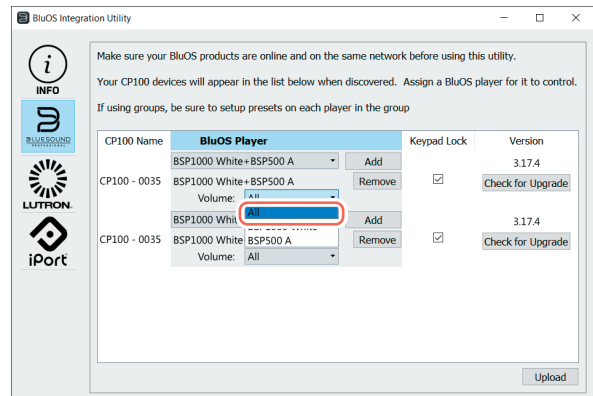


- Select the same group of players for CP100 #2. (Players must be in a temporary group, fixed groups are not supported.)
- Click "Add".

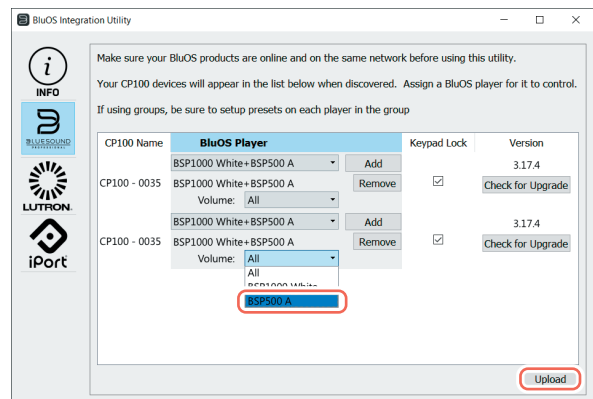


**TO CONTROL PRIMARY/SECONDARY PLAYERS**

- Click the "Volume" dropdown for CP100 #1 and select "All"



- Click the "Volume" dropdown for CP100 #2 and select a secondary player.



- When configuration choices are complete click "Upload" and then "OK" to complete the process.

**TO RESTORE ORIGINAL SETUP**

- Collapse group
- Reassign CP100's to individual players. The players may not go automatically to previous setup.

**BLUESOUND**  
PROFESSIONAL

[www.bluesoundprofessional.com](http://www.bluesoundprofessional.com)

©2023 BLUESOUND INTERNATIONAL  
A DIVISION OF LENBROOK INDUSTRIES LIMITED

All rights reserved. Bluesound International, Bluesound Professional, Bluesound, the stylized wordmark and "B" logotype and all other Bluesound product names and taglines are trademarks or registered trademarks of Bluesound International, a division of Lenbrook Industries Limited.  
No part of this publication may be reproduced, stored or transmitted in any form without the written permission of Bluesound International.  
While every effort has been made to ensure the contents are accurate at the time of publication, features and specifications may be subject to change without prior notice.

CP100-QM-EN-V07 - APR 2023